

# MINE SAFETY DEVICES

Deebar have developed a range of Station Stopping Devices as well as shaft gate locks which electrically and mechanically interlock the Shaft Bells to the Safety Devices, this system is covered by Patents and ensures complete safety.



## SLAM-IT GATE LOCK (PATENT NO. 2005/07038)

The “Slam-It” Station Gate Lock is designed specifically to prevent a double operation e.g. Once the Onsetter / Banksman has rung the conveyance away he can enter the conveyance and pull the Station Gate closed which then automatically locks the Station Gate. The Slam-It lock can be interlocked to the Winder Safety Circuit by means of the integrated magnetic switch. Additional contacts on the magnetic switch can be used to monitor the status of the gate i.e. open or closed.

The entire lock is manufactured from stainless steel.

- Avoids unauthorised entry.
- Access from both sides.
- Tamperproof.
- Low Maintenance.

Product Code:	Description:
*9148.15	Slam-It Gate Lock w/o Reed Switch
*9148.17	Slam-It Gate Lock c/w Reed Switch
*9148.02	Slam-It Gate Lock Key
*9148.20	Reed Switch for Slam-It



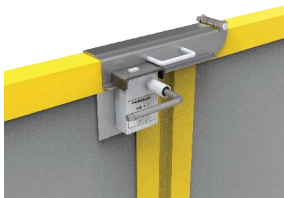
## LOCK-IT GATE LOCK

The “Lock-It” is similar to the Slam-It. It has the facility to interlock the station gate with the Belltronic lockbell unit, thus increasing the safety in the shaft area.

Additional contacts can be used to monitor the status of the Gate i.e. open or closed.

Various key options available.

Product Code:	Description:
*9148.07	Lock-It c/w PP Lock & Key
*9148.25	Lock-It c/w Fortress Lock & Key



## LATCH-IT GATE LOCK

The Latch-It Gate Lock is designed specifically for applications where there are two gates each hinged on a post, without a centre post. Operation: Align the two gates up and “drop” the Latch-It Gate Lock over the two gates which then automatically locks the gates. The Latch-It Gate Lock can be interlocked to the winder safety circuit by means of an integrated Magnetic Switch.

Additional contacts can be used to monitor the status of the Gate i.e. open or closed

Product Code:	Description:
*9148.03	Latch-It Gate Lock



## SLIDE-IT GATE LOCK

The “Slide-It” is similar to the Slam-It except that it is used for sliding gates. It has the facility to interlock the station gate with the Belltronic lockbell unit, thus increasing the safety in the shaft area.

Additional contacts can be used to monitor the status of the Gate i.e. open or closed.

Various key options available.

Product Code:	Description:
*9148.11	Slide-It Gate Lock c/w Fortress Lock & Key



## DEELOCK UNIT (PATENT NO. 98/8180)

This Unit interlocks the Bell System with various Station Safety Devices to prevent the unintentional opening and closing of safety devices to the shaft, thus providing safety when moving underground vehicles in the shaft area.

The Deelock Safety System has been designed to ensure that the responsible person (Onsetter/Banksman) follows a set procedure when operating safety devices on the specific Station. The system also ensures that the responsible person cannot leave the Station if the safety devices are not in a safe position.

*When ordering quote 9000... followed by the key number required*

Product Code:	Description:
*9000.02	Single Unit (N)
*9000.01	Double Unit (N)
*9000.____	Standard (A)



## 2 MAN LOCKOUT SYSTEM

The 2-Man Safety Lockout System is designed to prevent a designated area from being accessed by no less than two people at any one time. The Gate Access Key is fitted to the door of the sub-station and is normally trapped. Two different keys are required to gain access to the designated area. Keys held by the Electrician and the other Key held by the Foreman, these need to be inserted and locked in, after which two push buttons need to be activated (pushed) simultaneously. This action will then release the Gate Access Key, which in turn releases the Gate/Door Key unlocking the Gate/Door and releasing the trapped safety key of the authorised person. Both Keys will remain trapped until the Gate/Door is locked and the key returned to its original position.

*When ordering, quote Product Code 3000... and a unique Key series will then be allocated to your institution. When ordering replacement spares, quote 3000... followed by the Key number required.*

Product Code:	Description:
*3000.____	2 Man Lockout System



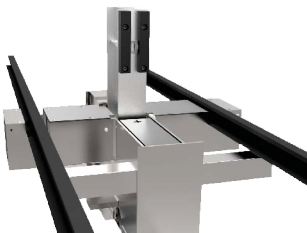
## D.A.M GARD

The new D.A.M Gard Farm Gate Lock can be fitted to mining Farm Gates and can be interlocked to the Shaft Signalling Unit and the Interlocking Panel to provide the ultimate in safety.

The lock is a heavy-duty Fortress Amgard lock that has been tested to over 1 million operations and is rated Ip67. The heavy-duty tongue unit has a misalignment tolerance of +/- 12mm and locks into the head with a Retention Force of 10 000 N. The lock is encased in a robust steel housing for added protection.

The key to operate the D.A.M Gard Farm Gate lock is the authorised Onsetter's key, which ensures that the gate is operated by the authorised person.

Product Code:	Description:
*9000.82	D.A.M Gard



## DEEBAR STATION STOP BLOCK

Station Stopping Devices can be installed on each underground level & bank providing safety when moving rolling stock in the shaft area.

The unit is extremely robust, manufactured from structural steel; the device can be coupled to a centre column or used independently.

The centre column incorporates Belltronics (shaft bells) which electro mechanically interlocks the Station Stopping Device to the Deelock Safety System for maximum shaft safety.

The Station Stopping Device can be operated manually or pneumatically.

This product is site specific and therefore each enquiry will require a detailed quotation.



## INTERLOCKING PANEL

The Stop Blocks are interlocked with the lockbell system, and therefore the conveyance has to be positioned on the bank or underground stations to operate the Stop Blocks. The onsetter / banksman will only be able to operate the Stop Block system once the onsetter's / banksman's key is placed and turned on in the lockbell system.

A push button on the Deeban Interlocking Panel will activate the pneumatic solenoid switch which in turn will activate the direction control valve for up or down movement of the stop blocks.



## PNEUMATIC PANEL

The Deeban Stop Block shaft safety device is pneumatically operated, interlocked with the lockbell (Belltronics) and provides the ultimate in shaft safety during loading and off-loading operations as well as slinging operations. These operations are all controlled via the Deeban Interlocking Panel that is situated adjacent to the lockbells (Belltronics).

The Interlocking Panel activates the equipment in the Pneumatic Panel which consists of a Solenoid and a FRL (Filter / Regulator / Lubricator).