

# KEYSWITCHES

A key switch is a switch that can be activated only by the use of a key. They are usually used in situations where access needs to be restricted to the switch's functions. Deebor offer 3 ranges of standard keyswitches; Castell, Fortress and PP Keyswitches.

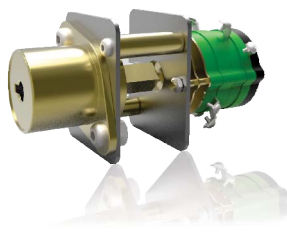


## CASTELL KEYS

Manufactured in brass making it ideally suited to use in harsh or corrosive environments.

*Other Series on Request*

Product Code:	Description:
*0109.02	L1 Castell Key
*0110.02	L2 Castell Key
*0111.02	L3 Castell Key
*0112.02	L4 Castell Key
*0113.02	L5 Castell Key



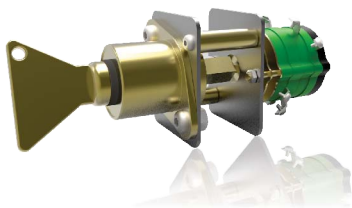
## CASTELL LOCK - C/W SWITCH

Suitable for insulating power to equipment or machinery.

Manufactured in brass for use in corrosive areas, this lock can be fitted with a variety of switch configurations. Standard with 1 x NO Contact.

*Other Series on Request*

Product Code:	Description:
*9519.00	L1 Castell Lock c/w Switch
*9519.01	L2 Castell Lock c/w Switch
*9519.02	L3 Castell Lock c/w Switch
*9519.03	L4 Castell Lock c/w Switch
*9519.04	L5 Castell Lock c/w Switch



## CASTELL LOCK - C/W SWITCH & KEY

Suitable for insulating power to equipment or machinery.

Manufactured in brass for use in corrosive areas, this lock can be fitted with a variety of switch configurations. Standard with 1 x NO Contact.

*Other Series on Request*

Product Code:	Description:
*9518.00	L1 Castell Lock c/w Switch & Key
*9518.01	L2 Castell Lock c/w Switch & Key
*9518.02	L3 Castell Lock c/w Switch & Key
*9518.03	L4 Castell Lock c/w Switch & Key
*9518.04	L5 Castell Lock c/w Switch & Key



## PP KEYS

Brass plated keys for use on PP Locks used in Shaft Signalling Units. Key directly drives the Switch Shaft.

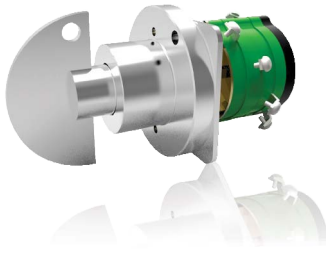
Product Code:	Description:
*0193.01	PPA Key
*0193.03	PPB Key
*0193.05	PPC Key
*0193.07	PPD Key
*0193.09	PPE Key
*0193.11	PPF Key
*0193.13	PPG Key
*0193.15	PPH Key



## PP LOCKS - C/W SWITCH

The PP Locks are manufactured in brass and are electro plated and is supplied as a standard with a switch with a N/O contact, however the key switch can be supplied with special switch ratings and/or contact arrangement.

Product Code:	Description:
*9518.24	PPA Lock c/w Switch
*9518.25	PPB Lock c/w Switch
*9518.26	PPC Lock c/w Switch
*9518.27	PPD Lock c/w Switch
*9518.28	PPE Lock c/w Switch
*9518.29	PPF Lock c/w Switch
*9518.30	PPG Lock c/w Switch
*9518.31	PPH Lock c/w Switch

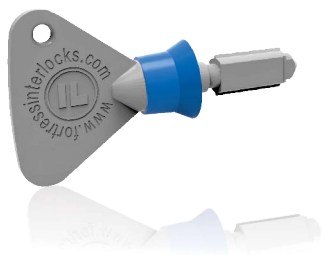


### PP LOCKS - C/W SWITCH & KEY

The PP Locks are manufactured in brass and are electro plated and is supplied as a standard with a switch with a N/O contact, however the key switch can be supplied with special switch ratings and/or contact arrangement.

Due to it's design, the key drives the switch shaft directly.

Product Code:	Description:
*9518.16	PPA Lock c/w Switch & Key
*9518.17	PPB Lock c/w Switch & Key
*9518.18	PPC Lock c/w Switch & Key
*9518.19	PPD Lock c/w Switch & Key
*9518.20	PPE Lock c/w Switch & Key
*9518.21	PPF Lock c/w Switch & Key
*9518.22	PPG Lock c/w Switch & Key
*9518.23	PPH Lock c/w Switch & Key



### CL FORTRESS KEYS

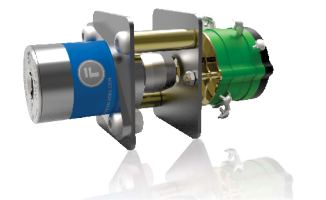
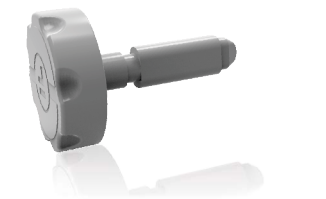
#### Standard Keys

Fortress Keys are manufactured from 316 Stainless Steel and have over 200 000 different combinations. Each different key combination is allocated with an engraved code onto the lock & key, of up to 30 characters (3 lines of 10 characters). Low profile configuration keys are also available.

#### Low Profile Keys

Low profile configurations are also available.

Product Code:	Description:
<b>STANDARD KEYS</b>	
*3600.01	CL1 Key
*3601.02	CL2 Key
*3602.00	CL3 Key
*3603.03	CL4 Key
*3604.03	CL5 Key
<b>LOW PROFILE KEYS</b>	
*3600.02	CL1 Key
*3601.01	CL2 Key
*3602.04	CL3 Key
*3603.02	CL4 Key



### CL FORTRESS LOCK - C/W SWITCH

Fortress Key Switch is suitable for Isolation, Switching Current or Isolating power to machinery. Direct Drive Operation - positively opens contacts. Special switching rating and / or contact arrangements available on request.

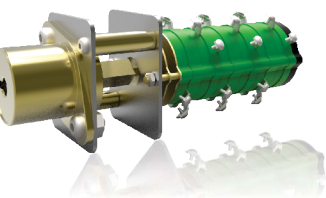
Product Code:	Description:
*3903.00	Key switch 1 Pole Off/On - CR-0202
*3903.06	Key switch 2 Pole Off/On - CR-0211
*3903.07	Key switch 2 Pole 1N/O & 1N/C - CR-0212
*3903.08	Key switch 4 Pole 2N/O & 2N/C - CR-0213



### CL FORTRESS LOCK - C/W SWITCH & KEY

Fortress Key Switch is suitable for Isolation, Switching Current or Isolating power to machinery. Direct Drive Operation - positively opens contacts. Special switching rating and / or contact arrangements available on request.

Product Code:	Description:
*3903.01	Key switch 1 Pole Off/On - CR-0202
*3903.02	Key switch 2 Pole Off/On - CR-0211
*3903.03	Key switch 2 Pole 1N/O & 1N/C - CR-0212
*3903.04	Key switch 4 Pole 2N/O & 2N/C - CR-0213



### GATE INTERLOCKS

The Gate Interlock Key Switch is a Castell Lock which operates both clock & anti-clockwise. Fitted with a switch with varying contacts used in Belltronic shaft signalling for Men-Material Switching.

See technical write up on Men-Material Switching.

Product Code:	Description:
*9518.13	L11 Gate Interlock c/w Switch & Key
*9518.14	L12 Gate Interlock c/w Switch & Key
*9518.15	L13 Gate Interlock c/w Switch & Key