

TELEPHONES & DISTRIBUTION BOXES

Underground communications with the surface was an urgent factor when considering the isolation and other problems with which the miners could be confronted. Deebor developed it's own range of PABX and Intercom type telephones.



WALLCOMM MK1

Robust IP65 rated, 2 Wire Intercom System with Battery Backup designed for arduous conditions.

- Available in Mild Steel or Stainless Steel
- The PCB and Battery is enclosed in a internal enclosure
- Built in charger with NiCad Batteries, Standby time ± 10 Hours
- Transmit and Receive Levels adjustable
- Unlimited number of intercoms on a system
- Tone calling & Paging facility
- Supply Voltage 24V DC, 110V/220V AC
- Suggested Cable: Single or Individually Screened Twisted Pair Cable

Product Code:	Description:
*9400.00	MK1 Mild Steel 110/220V
*9401.00	MK1 Stainless Steel 110/220V



WALLCOMM MK2 - INTRINSICALLY SAFE

Robust ,IP65 rated, 2 Wire intrinsically safe Intercom System for gases such as methane, petrol gases, ethylene group gases and hydrogen group gases, Also suited for Class 1 division 1 or 2 and Class 2 division 1 or 2 situations.

- Each unit has a Battery Backup, Standby time ± 10 Hours
- Available in Mild Steel or Stainless Steel
- The PCB and Battery is enclosed in a internal enclosure
- Built in charger with NiCad Batteries
- Transmit and Receive Levels adjustable
- Unlimited number of intercoms on a system
- Tone calling & Paging facility
- Supply Voltage 24V DC, 110V/220V AC
- Suggested Cable: Single or Individually Screened Twisted Pair Cable

Product Code:	Description:
*9403.00	MK1 Mild Steel Intrinsically Safe
*9404.00	MK1 Stainless Steel Intrinsically Safe



WALLCOMM HIGH OUTPUT

High Output, IP65 Intercom Unit is fitted with a Flashing Beacon and an Audible Siren and used mainly in noisy environments where the flashing beacon and siren indicates the call.

- The unit is fitted with Battery Backup, Standby time ± 10 Hours
- Available in Mild Steel or Stainless Steel
- The PCB and Battery is enclosed in a internal enclosure
- Built in charger with NiCad Batteries
- Transmit and Receive Levels adjustable
- Unlimited number of intercoms on a system
- Tone calling & Paging facility
- Supply Voltage 24V DC, 110V/220V AC
- Suggested Cable: Single or Individually Screened Twisted Pair Cable

Product Code:	Description:
*9425.01	Mild Steel (High Output)
*9425.05	Mild Steel (High Output) c/w Flashing Beacon & Siren
*9425.04	Stainless Steel (High Output)
*9425.06	Stainless Steel (High Output) c/w Flashing Beacon & Siren



POLYCOMM

A two Wire Intercom System with Battery Backup. Manufactured in a DMC Enclosure which is IP65 Rated.

- The Intercom can also be fitted with a Handset
- Built in charger with NiCad Batteries, Standby time ± 10 Hours
- Transmit and Receive Levels adjustable
- Unlimited number of intercoms on a system
- Tone calling & Paging facility
- Supply Voltage 24V DC, 110V/220V AC
- Suggested Cable: Single or Individually Screened Twisted Pair Cable

Product Code:	Description:
*9402.01	Polycomm with Handset
*9402.00	Polycomm without Handset

TELEPHONES & DISTRIBUTION BOXES



WINCH-COM

A two Wire Intercom System with Battery Backup. Manufactured in a DMC Enclosure which is IP65 Rated and then fitted in a s/steel housing with a canopy.

- Built in charger with NiCad Batteries, Standby time ± 10 Hours
- Transmit and Receive Levels adjustable
- Unlimited number of intercoms on a system
- Tone calling & Paging facility
- Supply Voltage 24V DC, 110V/220V AC, 525V AC

Product Code:	Description:
*9037.00	Winch-com



DEECOM 104

Robust and Tamperproof Intercom System. A two Wire Intercom System with Battery Backup designed for arduous conditions.

- Manufactured in Stainless Steel and epoxy powder coated.
- Fitted with Neoprene Handset & stainless steel cord
- Built in charger with NiCad Batteries, Standby time ± 10 Hours
- Transmit and Receive Levels adjustable
- Unlimited number of intercoms on a system
- Tone calling & Paging facility
- Supply Voltage 24V DC, 110V/220V AC
- Suggested Cable: Single or Individually Screened Twisted Pair Cable

Product Code:	Description:
*9407.01	Deecom 104 with handset
*9407.00	Deecom 104 without handset



DEECOM 101

The Deecom 101 is a Robust PABX/Auto type Telephone.

- Stainless Steel powder coated enclosure
- Concealed mounting to eliminate vandalism.
- Fitted with a Neoprene Handset.
- Stainless Steel Robust cord.
- Push Button in place of switch-hook to eliminate the possibility of the instrument being left inoperative.
- Recessed keypad and button to eliminate abuse.

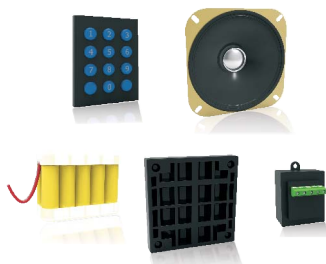
Product Code:	Description:
*9414.00	Push Button Telephone c/w Handset

TELEPHONE SPARES

A range of additional spares that is available for the Wallcomm and Deecom range of products, such as:

- PC Boards for the Wallcomm / Polycomm / Deecom104 / Deecom 101.
- Speakers 5Watt 8 Ohm.
- Transmitter / receiver.
- Power Supplies.
- Nickel Cadmium Battery.
- Microphone / Speaker Grills.

Product Code:	Description:
*0710.00	PC Board for Wallcomm MK1
*0710.02	PC Board for Wallcomm High Output
*0710.00	PC Board for Deecom 104
*0746.00	PC Board for Deecom 101
*0704.00	Speaker 4" 5W 8 Ohm
*0705.00	Microphone Grill
*0706.00	Speaker Grill
*0711.00	Transmitter / Receiver
*0712.00	Power Supply 110/220V DC
*0728.00	Nickle Cadmium Battery



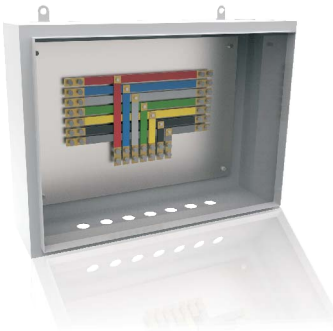


TELEPHONE DISTRIBUTION BOX

Telephone Distribution Boxes with Disconnect Terminals.

- Enclosure manufactured in stainless steel.
- Supplied as 10/20/30/40/50 pair or to suit customer's specification.
- Fitted with Knife action Din Rail Disconnect Terminals or
- Krone terminals

Product Code:	Description:
*9163.00	10 Pair c/w Din Rail Terminals
*9162.00	20 Pair c/w Din Rail Terminals
*9164.00	30 Pair c/w Din Rail Terminals
*9165.00	40 Pair c/w Din Rail Terminals
*9167.00	50 Pair c/w Din Rail Terminals

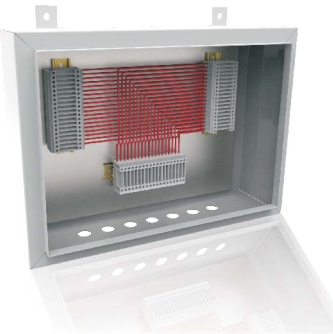


BELL DISTRIBUTION BOX - BUSBAR

Busbar type Used to terminate shaft bell cables on each level in a mine shaft.

- Enclosure manufactured in stainless steel.
- Insulated colour coded Bus bars.
- Brass slide link terminals fitted to disconnect line for testing.
- Supplied in 7/9/12 and 19 way or to customer's specification.

Product Code:	Description:
*9152.00	7 Way, c/w Busbars & Slide Links
*9156.00	12 Way, c/w Busbars & Slide Links
*9160.00	19 Way, c/w Busbars & Slide Links



BELL DISTRIBUTION BOX - WIRED

Wired type Used to terminate shaft bell cables on each level in a mine shaft.

- Enclosure manufactured in stainless steel.
- Din Rail mounted terminals fitted to disconnect line for testing.
- Insulated wires. Pre-numbered
- Supplied standard 7/9/12/19/27 and 37 way or to customer's specifications.

Product Code:	Description:
*9150.00	7 Way, in-out-local, wired to terminals
*9154.00	12 Way, in-out-local, wired to terminals
*9158.00	19 Way, in-out-local, wired to terminals