

KEYSWITCHES

A key switch is a switch that can be activated only by the use of a key. They are usually used in situations where access needs to be restricted to the switch's functions. Deebor offer 3 ranges of standard keyswitches; Castell, Fortress and PP Keyswitches.

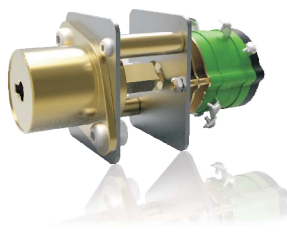


CASTELL KEYS

Manufactured in brass making it ideally suited to use in harsh or corrosive environments.

Other Series on Request

Product Code:	Description:
*0109.02	L1 Castell Key
*0110.02	L2 Castell Key
*0111.02	L3 Castell Key
*0112.02	L4 Castell Key
*0113.02	L5 Castell Key



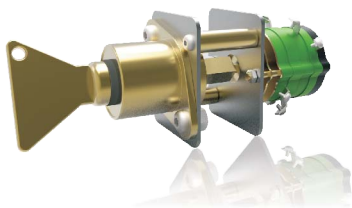
CASTELL LOCK - C/W SWITCH

Suitable for insulating power to equipment or machinery.

Manufactured in brass for use in corrosive areas, this lock can be fitted with a variety of switch configurations. Standard with 1 x NO Contact.

Other Series on Request

Product Code:	Description:
*9519.00	L1 Castell Lock c/w Switch
*9519.01	L2 Castell Lock c/w Switch
*9519.02	L3 Castell Lock c/w Switch
*9519.03	L4 Castell Lock c/w Switch
*9519.04	L5 Castell Lock c/w Switch



CASTELL LOCK - C/W SWITCH & KEY

Suitable for insulating power to equipment or machinery.

Manufactured in brass for use in corrosive areas, this lock can be fitted with a variety of switch configurations. Standard with 1 x NO Contact.

Other Series on Request

Product Code:	Description:
*9518.00	L1 Castell Lock c/w Switch & Key
*9518.01	L2 Castell Lock c/w Switch & Key
*9518.02	L3 Castell Lock c/w Switch & Key
*9518.03	L4 Castell Lock c/w Switch & Key
*9518.04	L5 Castell Lock c/w Switch & Key



PP KEYS

Brass plated keys for use on PP Locks used in Shaft Signalling Units. Key directly drives the Switch Shaft.

Product Code:	Description:
*0193.01	PPA Key
*0193.03	PPB Key
*0193.05	PPC Key
*0193.07	PPD Key
*0193.09	PPE Key
*0193.11	PPF Key
*0193.13	PPG Key
*0193.15	PPH Key



PP LOCKS - C/W SWITCH

The PP Locks are manufactured in brass and are electro plated and is supplied as a standard with a switch with a N/O contact, however the key switch can be supplied with special switch ratings and/or contact arrangement.

Product Code:	Description:
*9518.24	PPA Lock c/w Switch
*9518.25	PPB Lock c/w Switch
*9518.26	PPC Lock c/w Switch
*9518.27	PPD Lock c/w Switch
*9518.28	PPE Lock c/w Switch
*9518.29	PPF Lock c/w Switch
*9518.30	PPG Lock c/w Switch
*9518.31	PPH Lock c/w Switch

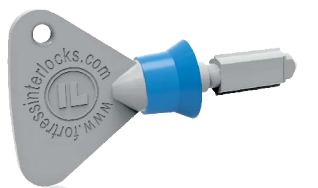


PP LOCKS - C/W SWITCH & KEY

The PP Locks are manufactured in brass and are electro plated and is supplied as a standard with a switch with a N/O contact, however the key switch can be supplied with special switch ratings and/or contact arrangement.

Due to it's design, the key drives the switch shaft directly.

Product Code:	Description:
*9518.16	PPA Lock c/w Switch & Key
*9518.17	PPB Lock c/w Switch & Key
*9518.18	PPC Lock c/w Switch & Key
*9518.19	PPD Lock c/w Switch & Key
*9518.20	PPE Lock c/w Switch & Key
*9518.21	PPF Lock c/w Switch & Key
*9518.22	PPG Lock c/w Switch & Key
*9518.23	PPH Lock c/w Switch & Key



CL FORTRESS KEYS

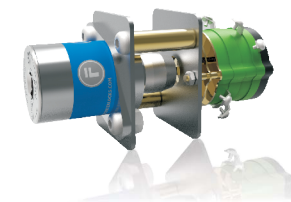
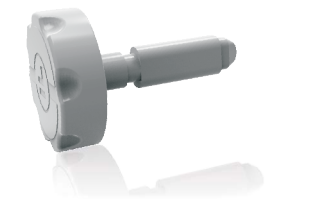
Standard Keys

Fortress Keys are manufactured from 316 Stainless Steel and have over 200 000 different combinations. Each different key combination is allocated with an engraved code onto the lock & key, of up to 30 characters (3 lines of 10 characters). Low profile configuration keys are also available.

Low Profile Keys

Low profile configurations are also available.

Product Code:	Description:
STANDARD KEYS	
*3600.01	CL1 Key
*3601.02	CL2 Key
*3602.00	CL3 Key
*3603.03	CL4 Key
*3604.03	CL5 Key
LOW PROFILE KEYS	
*3600.02	CL1 Key
*3601.01	CL2 Key
*3602.04	CL3 Key
*3603.02	CL4 Key



CL FORTRESS LOCK - C/W SWITCH

Fortress Key Switch is suitable for Isolation, Switching Current or Isolating power to machinery. Direct Drive Operation - positively opens contacts. Special switching rating and / or contact arrangements available on request.

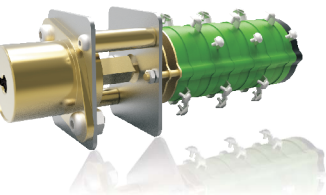
Product Code:	Description:
*3903.00	Key switch 1 Pole Off/On - CR-0202
*3903.06	Key switch 2 Pole Off/On - CR-0211
*3903.07	Key switch 2 Pole 1N/O & 1N/C - CR-0212
*3903.08	Key switch 4 Pole 2N/O & 2N/C - CR-0213



CL FORTRESS LOCK - C/W SWITCH & KEY

Fortress Key Switch is suitable for Isolation, Switching Current or Isolating power to machinery. Direct Drive Operation - positively opens contacts. Special switching rating and / or contact arrangements available on request.

Product Code:	Description:
*3903.01	Key switch 1 Pole Off/On - CR-0202
*3903.02	Key switch 2 Pole Off/On - CR-0211
*3903.03	Key switch 2 Pole 1N/O & 1N/C - CR-0212
*3903.04	Key switch 4 Pole 2N/O & 2N/C - CR-0213



GATE INTERLOCKS

The Gate Interlock Key Switch is a Castell Lock which operates both clock & anti-clockwise. Fitted with a switch with varying contacts used in Belltronic shaft signalling for Men-Material Switching.

See technical write up on Men-Material Switching.

Product Code:	Description:
*9518.13	L11 Gate Interlock c/w Switch & Key
*9518.14	L12 Gate Interlock c/w Switch & Key
*9518.15	L13 Gate Interlock c/w Switch & Key